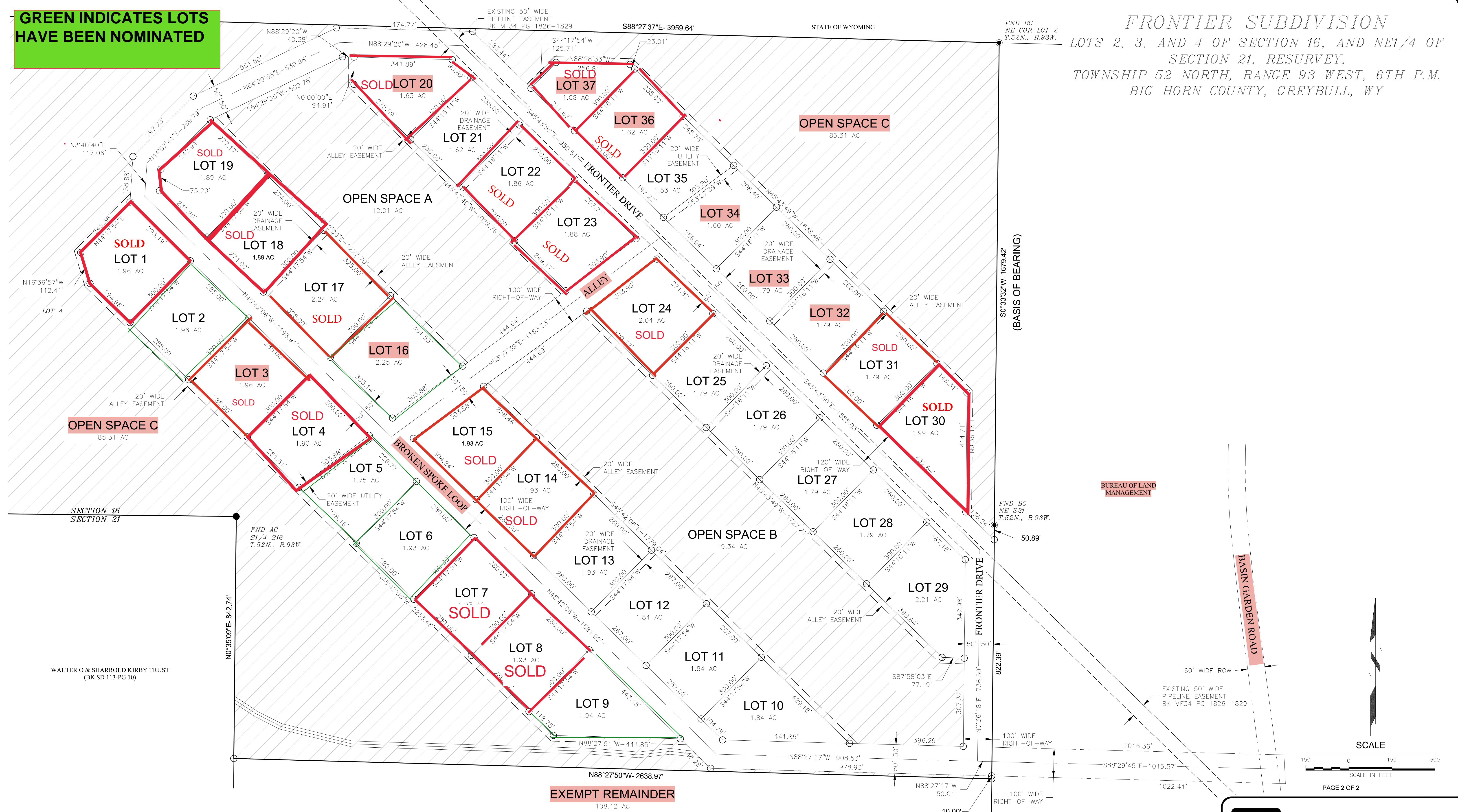


GREEN INDICATES LOTS HAVE BEEN NOMINATED

FRONTIER SUBDIVISION
 LOTS 2, 3, AND 4 OF SECTION 16, AND NE1/4 OF SECTION 21, RESURVEY,
 TOWNSHIP 52 NORTH, RANGE 93 WEST, 6TH P.M.
 BIG HORN COUNTY, GREYBULL, WY



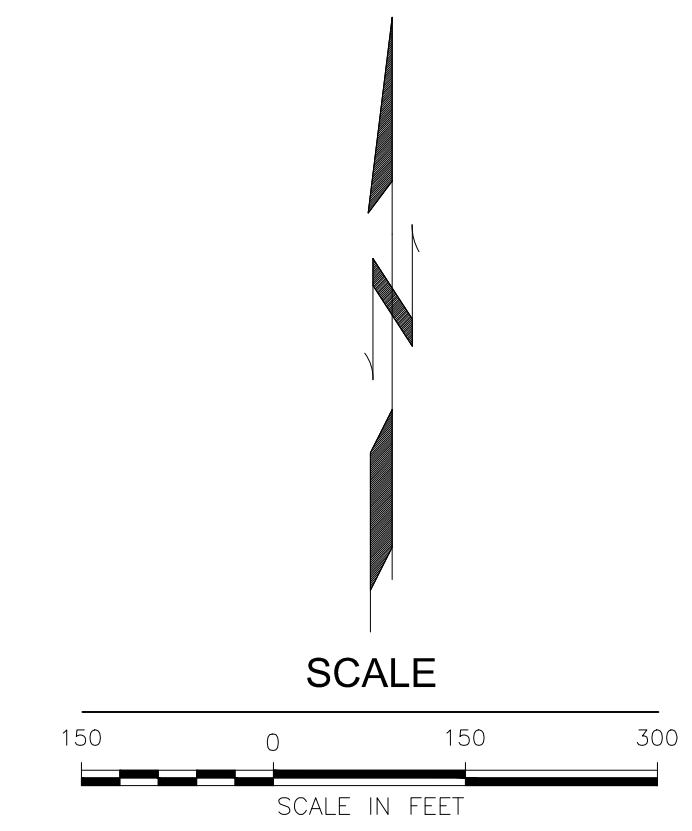
SECTION 16
SECTION 21

WALTER O & SHARROLD KIRBY TRUST
(BK SD 113-PG 10)

BUREAU OF LAND
MANAGEMENT

FND BC
NE S21
T.52N., R.93W.

FND AC
S1/4 S16
T.52N., R.93W.



LEGEND

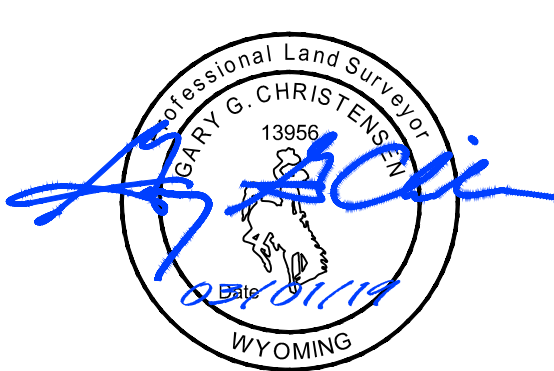
NEW LOT LINE	
EXISTING BOUNDARY	
RIGHT-OF-WAY LINE	
NEW EASEMENT LINE	
FOUND BRASS CAP	
FOUND ALUMINUM CAP	
SET 5/8"x24" REBAR WITH 2 1/2" ALUMINUM CAP	
MEASURED DATA	
SUBDIVISION BOUNDARY MEASURED DATA	

LEGAL DESCRIPTION

BEING A PARCEL OF LAND LYING WITHIN THE NE1/4 OF SECTION 21 AND LOTS 2, 3, AND 4 OF SECTION 16, RESURVEY, T.52N., R.93W., 6TH P.M., BIG HORN COUNTY WYOMING, MORE PARTICULARLY DESCRIBED AS FOLLOWS:

BEGINNING AT A FOUND BRASS CAP MARKING THE NE CORNER OF SAID LOT 2; THENCE S.00°33'32"W., ALONG THE EAST LINE THEREOF, 1679.42 FEET, TO A FOUND BRASS CAP MARKING THE SE CORNER OF SAID LOT 2; THENCE S.00°36'18"W., ALONG THE EAST LINE OF SAID SECTION 21 883.28 FEET, TO A 2 1/2" ALUMINUM CAP SET THIS SURVEY; THENCE N.88°27'50"W., 2638.97 FEET, TO A 2 1/2" ALUMINUM CAP SET THIS SURVEY; THENCE N.00°35'09"E., 842.74 FEET, TO A FOUND ALUMINUM CAP MARKING THE S1/4 CORNER OF SAID SECTION 16; THENCE N.89°20'39"W., 1319.45 FEET, TO A FOUND ALUMINUM CAP MARKING THE SW CORNER OF SAID LOT 4; THENCE N.00°32'08"E., ALONG THE WEST LINE THEREOF, 1740.51 FEET, TO A FOUND ALUMINUM CAP MARKING THE NW CORNER OF SAID LOT 4; THENCE S.88°27'37"E., 3959.64 FEET, MORE OR LESS, TO THE POINT OF BEGINNING.

CONTAINING 207.78 ACRES, MORE OR LESS.



GARY G. CHRISTENSEN
WYOMING PLS 13956

T-O ENGINEERS

FINAL PLAT

FRONTIER SUBDIVISION
 WITHIN
 LOTS 2, 3, AND 4 OF SECTION 16, AND NE1/4 OF SECTION 21,
 RESURVEY, T.52N., R.93W., 6TH P.M.,
 BIG HORN COUNTY, WYOMING
 TOWN OF GREYBULL, WY

PROJECT NO:181229	SURVEYED BY:PJD	REVIEWED BY:GGC
DATE SURVEYED:10/26/17	DRAFTED BY:TJH	REVISION NO:1